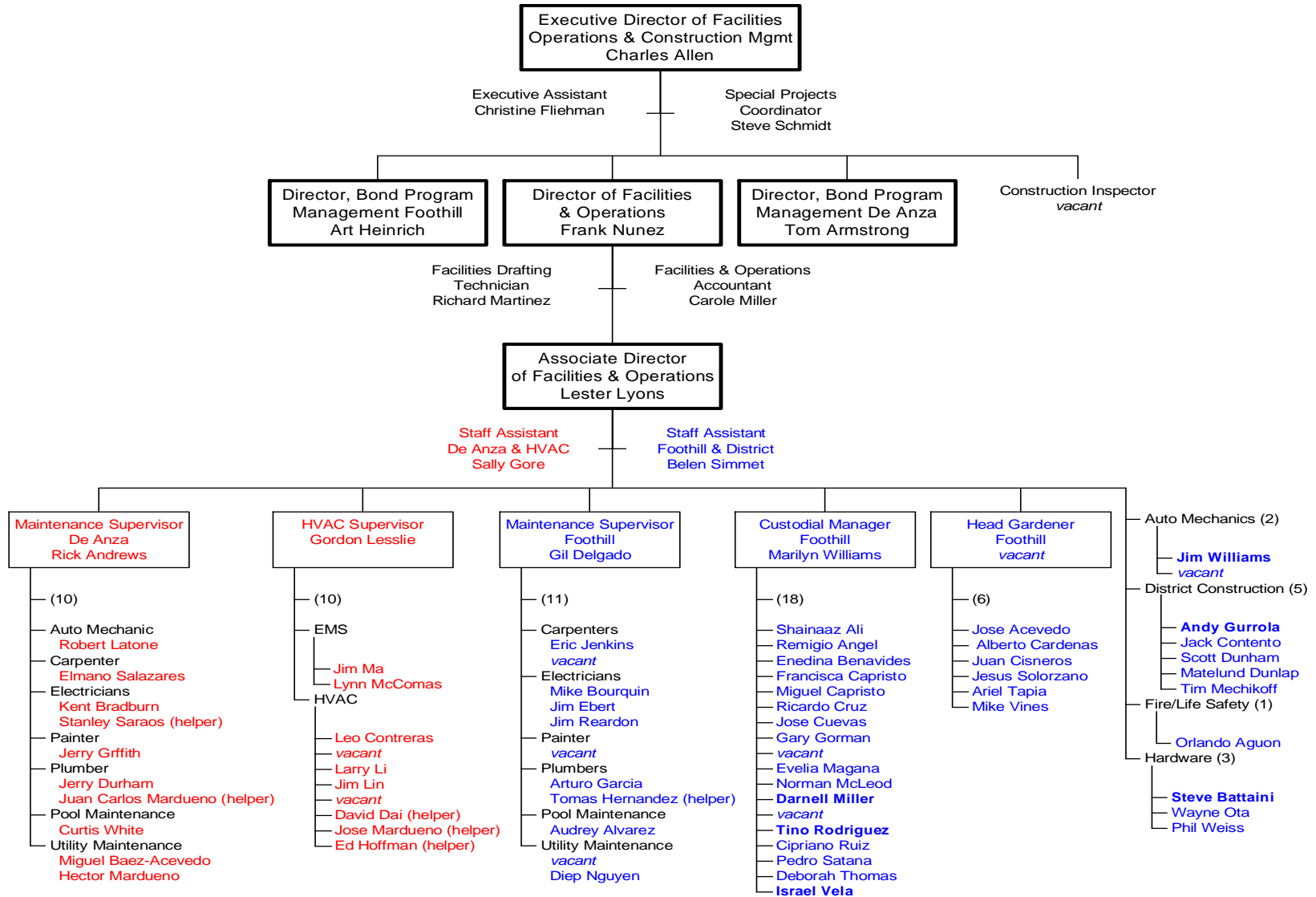


Foothill-De Anza Community College District

OFFICE OF FACILITIES, OPERATIONS & CONSTRUCTION MANAGEMENT

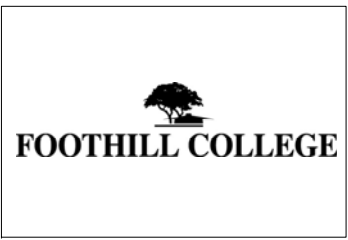
10/1/2009



Measure C: July 2009 through June 2010



Exhibit A



Charles Allen
Exe. Dir., Facilities, Oper. & Constr.Mgmt.

Bob Crowder
Project Executive

Rod Elgie
Operations Manager

Art Heinrich
Bond Director

Tom Armstrong
Bond Director

Ann Kennedy
Financial Manager

Casey Michaelis
Senior Project Manager

Scott Jewell
Senior Project Manager

Susan Moore
Project Accountant

Irina Thornton
Project Accountant

Julie Bernhardt
Admin

Nancy Le
Admin

Regional Resources

- Steve Szoke: Scheduling Executive
- Ilia Florentin: Scheduling Manager
- Jeff Scogin: Doc/Media Manager
- Rafael Cuadros: Accounting Support
- Engineering Support

Optional Additional Resources

PM Staff

PM Staff

CM Staff

CM Staff

Foothill College/ District		
Large Cap	Small Cap/Renovation	Sched Maint/ Maint Projects
<p>Ann Kennedy Property Acquisition</p> <p>Thierry Hsu Project Manager</p> <p>Todd Leicht Associate PM</p>	<p>Thierry Hsu Project Manager</p> <p>Mike Hohl Sr. PE</p> <p>Todd Leicht Associate PM</p>	<p>Chris Untrauer Sr. PE</p> <p>Todd Leicht Associate PM</p>
<p>Support Staff Superintendent(s) Project Engineer(s) Office Engineer(s)</p>	<p>Support Staff Superintendent(s) Project Engineer(s) Office Engineer(s)</p>	<p>Support Staff Superintendent(s) Project Engineer(s) Office Engineer(s)</p>

De Anza College		
Sched Maint/ Maint Projects	Small Cap/Renovation	Large Cap
<p>Chris Untrauer Sr. PE</p> <p>Dan Brinkman Associate PM</p>	<p>Tim McBrien Project Manager</p> <p>Dan Brinkman Associate PM</p>	<p>Joel Heyne Project Manager</p>
<p>Support Staff Superintendent(s) Project Engineer(s) Office Engineer(s)</p>	<p>Support Staff Superintendent(s) Project Engineer(s) Office Engineer(s)</p>	<p>Support Staff Superintendent(s) Project Engineer(s) Office Engineer(s)</p>