

Banner Performance Reporting and Analytics Banner ODS Finance Functional Training Workbook

Release 8.0 - April 2008

Updated 4/24/2008



SUNGARD HIGHER EDUCATION

What can we help you achieve?

SunGard Higher Education
4 Country View Road
Malvern, Pennsylvania 19355
United States of America
(800) 522 - 4827

Customer Support Center website
<http://connect.sungardhe.com>

Distribution Services e-mail address
distserv@sungardhe.com

Other services

In preparing and providing this publication, SunGard Higher Education is not rendering legal, accounting, or other similar professional services. SunGard Higher Education makes no claims that an institution's use of this publication or the software for which it is provided will insure compliance with applicable federal or state laws, rules, or regulations. Each organization should seek legal, accounting and other similar professional services from competent providers of the organization's own choosing.

Trademark

Without limitation, SunGard, the SunGard logo, Banner, Campus Pipeline, Luminis, PowerCAMPUS, Matrix, and Plus are trademarks or registered trademarks of SunGard Data Systems Inc. or its subsidiaries in the U.S. and other countries. Third-party names and marks referenced herein are trademarks or registered trademarks of their respective owners.

Revision History Log

Publication Date	Summary
------------------	---------

4/30/2008	New version that supports 8.0 software.
-----------	---

Notice of rights

Copyright © SunGard Higher Education 2005-8. This document is proprietary and confidential information of SunGard Higher Education Inc. and is not to be copied, reproduced, lent, displayed or distributed, nor used for any purpose other than that for which it is specifically provided without the express written permission of SunGard Higher Education Inc.

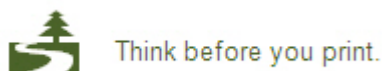


Table of Contents

Introduction	4
Finance Metadata	5
Oracle Basic Terms and Concepts	7
Common Business Concept Diagrams	10
7 Common Business Concept Diagrams	11
Address Views and Their Purpose	15
Common Display Rules	19
Finance Business Concept Diagrams	21
Budget Availability Ledger Diagram	22
Budget Detail Diagram	23
Encumbrance Diagram	24
Endowment Distribution Diagram	25
Endowment Units Diagram	26
Fixed Assets Diagram	27
General Ledger Diagram	28
Grant and Project Diagram	29
Grant Ledger Diagram	30
Invoice Payable Diagram	31
Operating Ledger Diagram	32
Purchasing Payable Diagram	33
Transaction History	34
Finance Display Rules	38
Finance Display Rules	39
Finance Self-Service Reporting Templates	40
Finance Self-Service Reporting Templates	41
Exercise	44
Run Finance Sample Reports	45
Appendix	48
60 Reporting and Slotted Common Views	49
64 Reporting and Slotted Finance Views	50

Introduction



Course goal

The goal of this workbook is to provide you the knowledge and practice to run Finance Banner ODS reports.

Course objectives

In this course you will learn how to:

- explain the concept, data, frequency and data sources involved in Common and Finance reporting views
- identify primary keys used with specific Common and Finance Reporting Views
- list reporting and slotted views
- describe Finance report templates, including template parameters.

Intended audience

- Department Functional/Technical Staff - Internal designated report writers
- Department Managers, IT Department Support Staff - responsible for report writing.

Prerequisites

To complete this course, you should have

- completed the Banner ODS Functional Overview Training Workbook.

Finance Metadata

Description

Finance metadata is information describing the data in tables. Metadata consists of information such as the source and targets of data.

Finance Metadata Reports

An example of Finance metadata reports to choose from is shown below.

[Preferences & Security](#) [Options](#) [Meta Data](#) [New Web Tailor Administration](#)

Search

[SITE MAP](#) [HELP](#) [EXIT](#)

View Target Report List

Subject Area: <- | -> | [Select](#)

Finance [\[Add Target\]](#) [\[List Composite Views\]](#) [Preferences](#)

☐ Show locally modified targets only

<u>Reporting View</u>	<u>Business Definition</u>	<u>Key & Frequency</u>	<u>Recommended Search Columns</u>
ACCOUNT_ATTRIBUTES	Contains a list of all the set codes, attribute types, attribute values, and attribute values begin and end date associated with an account.	One row per chart of accounts per account code per attribute type per attribute value per set code.	CHART_OF_ACCOUNTS, ACCOUNT, ATTRIBUTE_TYPE, ATTRIBUTE_VALUE,
ACCOUNT_HIERARCHY	Contains a list of all general ledger and operating ledger accounts with associated hierarchy levels, account type,	One row per chart of accounts per account.	CHART_OF_ACCOUNTS, ACCOUNT

Metadata Report

Upon clicking one of the Finance metadata reporting views, that view will open and appear onscreen. The example below shows the Finance ENCUMBRANCE_LEDGER report.

Preferences & Security Options **Meta Data** New Web Tailor Administration

Search

[SITE MAP](#) [HELP](#) [EXIT](#)

View Target Report

Press the Publish button at the bottom of this page to publish the HTML pages

Subject Area: <- | -> | [Select](#)

Finance [\[Preview\]](#) [\[List Composite Views\]](#)

[Preferences](#)

Reporting View: <- | -
> | [Select](#)

ENCUMBRANCE_LEDGER [\[Properties\]](#) [\[Add Target Column\]](#) [\[Sync Comments\]](#)

Business Definition	Contains encumbrance ledger posted amounts for initial commitment adjustments, and current liquidations by fiscal year and period for encumbrance document number and accounting distribution.
Key & Frequency	One row per encumbrance document number per item per sequence fiscal year and period.
Recommended Search Columns	ENCUMBRANCE_NUMBER, ITEM, SEQUENCE_NUMBER, FISCAL_YEAR

Target Column	Business Definition	Database Data Type	Source Name
ADMINISTRATIVE_GROUP	Organization-oriented identifier for the record used to determine access authorization to this record. Institution defined.	VARCHAR2 (255)	NA

Oracle Basic Terms and Concepts

Oracle Terms and Concepts

1. Composite and Slotted Tables

- Banner ODS Composite Table
 - Match element-to-element to the Banner source Composite Views
 - Loaded and refreshed from Banner
 - Represent a conceptual organizational structure such as Student or a Receivable Customer
 - Fine grained access can be applied to them
- Banner ODS Slotted Table
 - Stores data values for a specific code related to a base table such as test scores
 - Used to de-normalize repeating concepts
 - Populated from rules in MGRSDAX
 - Optimizes speed of queries

2. Views

- A view is a virtual table. It does not physically exist. Rather, it is created by a query joining one or more tables.
- Data from each Banner ODS composite table is presented in one or more reporting views. The Banner ODS reporting views are the views that end users will use to create reports within the Banner ODS. Users will point their report writing tool at these views and build reports.

3. Joins

- Inner Join (simple join)
 - The most common type of join. Inner joins return all rows from multiple tables where the join condition is met.
- Outer Join
 - Returns all rows from one table and only those rows from a secondary table where the joined fields are equal (join condition is met.)

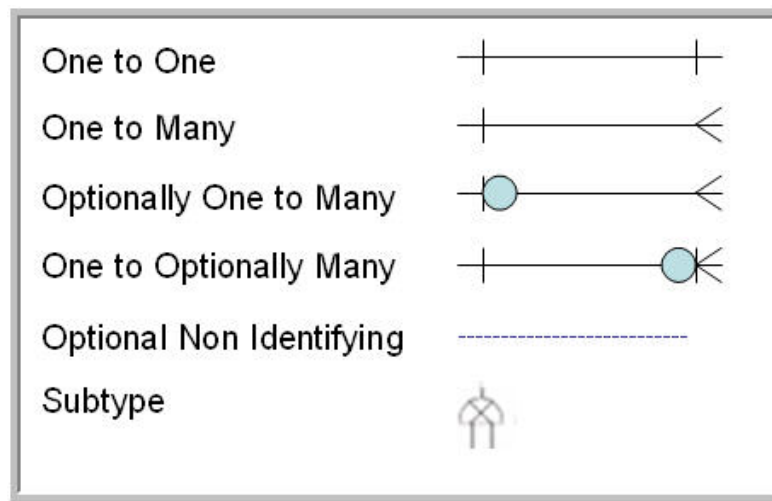
4. Metadata

- Tells what data columns are in the Banner ODS, a definition of their business use, the type of data (number, character, date, etc.), how long they are, where they come from (in the source system) and their destination (in the target system.)

5. Display Rules

- Enable you to control and customize how data stored in your Banner ODS composite tables is displayed in your Reporting views
- Determine the positional location of data in a view, or the hierarchical order in which a particular type of data should be retrieved
- "Positional" display rules are required for all Slotted views
- "Hierarchical" display rules are required for a sub-set of (non-slotted) Reporting views
- Also some used to determine a value stored in either an Banner ODS composite table or displayed in an ODS Reporting view
- Stored in the Banner ODS database table – MGRSDAX

6. ERD Rules of Cardinality



Note: SunGard Higher Education refers to ERDs as Business Concept Views

7. Primary and Foreign Keys

- A **primary** key is a single field or combination of fields that uniquely defines a record. None of the fields that are part of the primary key can contain a null value. A view can have only one primary key.
- A **foreign** key means that values in one table must also appear in another table. The referenced table is called the parent table while the table with the foreign key is called the child table.

8. Index

- An index is a performance-tuning method of allowing faster retrieval of records
- An index creates an entry for each value that appears in the indexed columns.

9. Cartesian Product

- A Cartesian join is when you join every row of one view to every row of another view.
- A Cartesian join is very CPU intensive, and is usually done by mistake.

Common Business Concept Diagrams



Introduction

The goal of this section is to identify Common business concepts and display rules.

Objectives

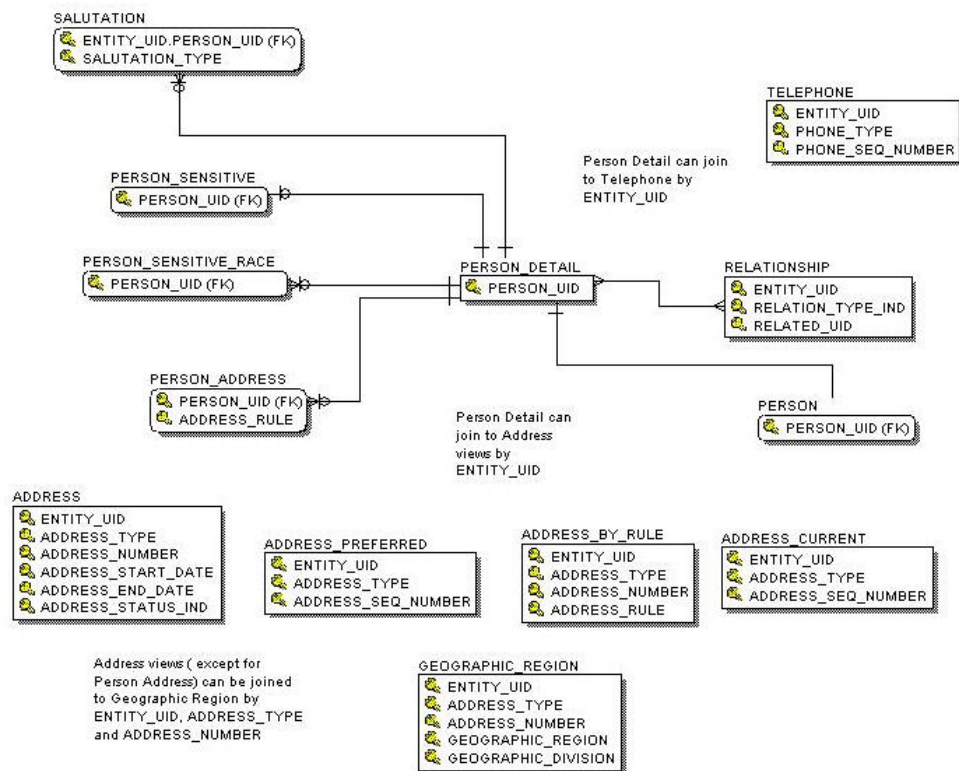
At the end of this section, you will be able to

- identify Common reporting and slotted views
- set Common display rules.

7 Common Business Concept Diagrams

1. Event
2. Institution
3. Organization Entity
4. Person Demographic
5. Person Role
6. Person Supplemental
7. Relationship

Person Demographic Diagram

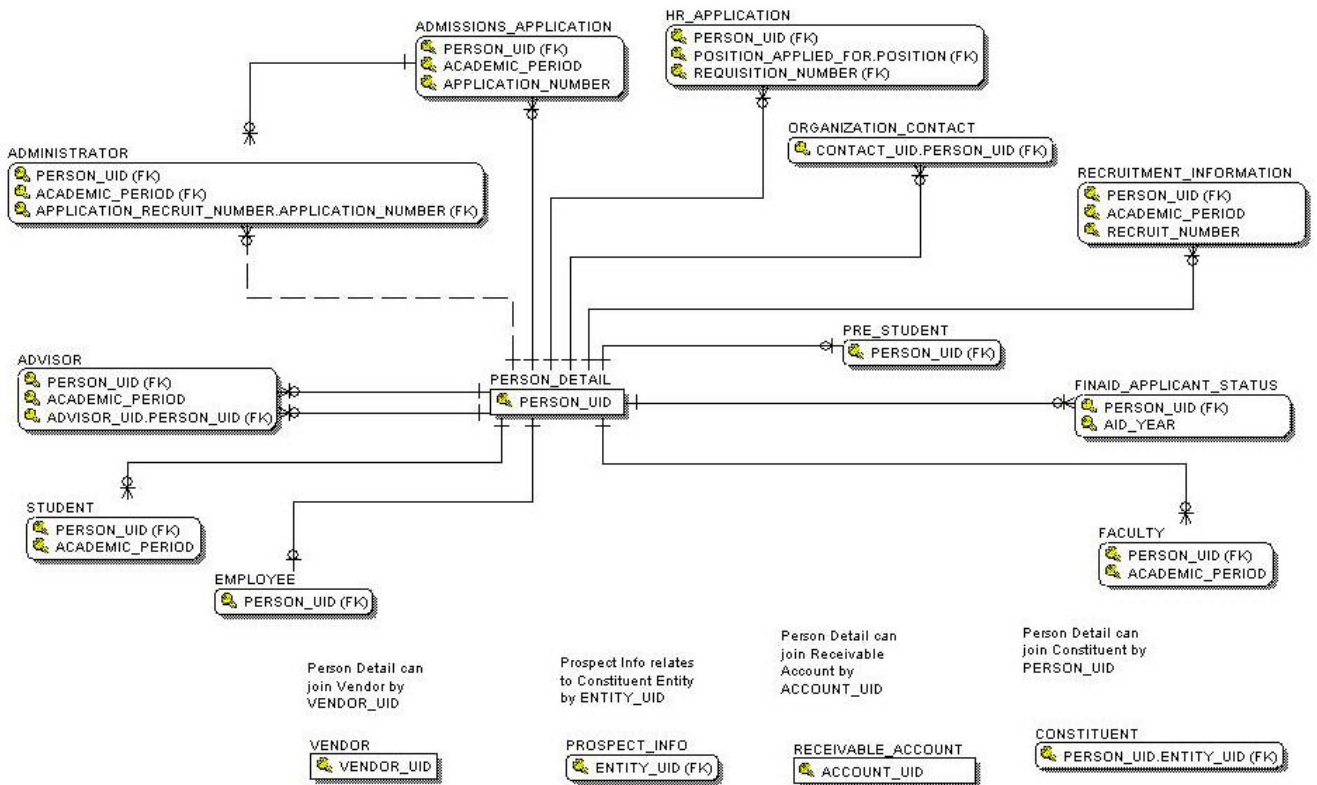


Primary View

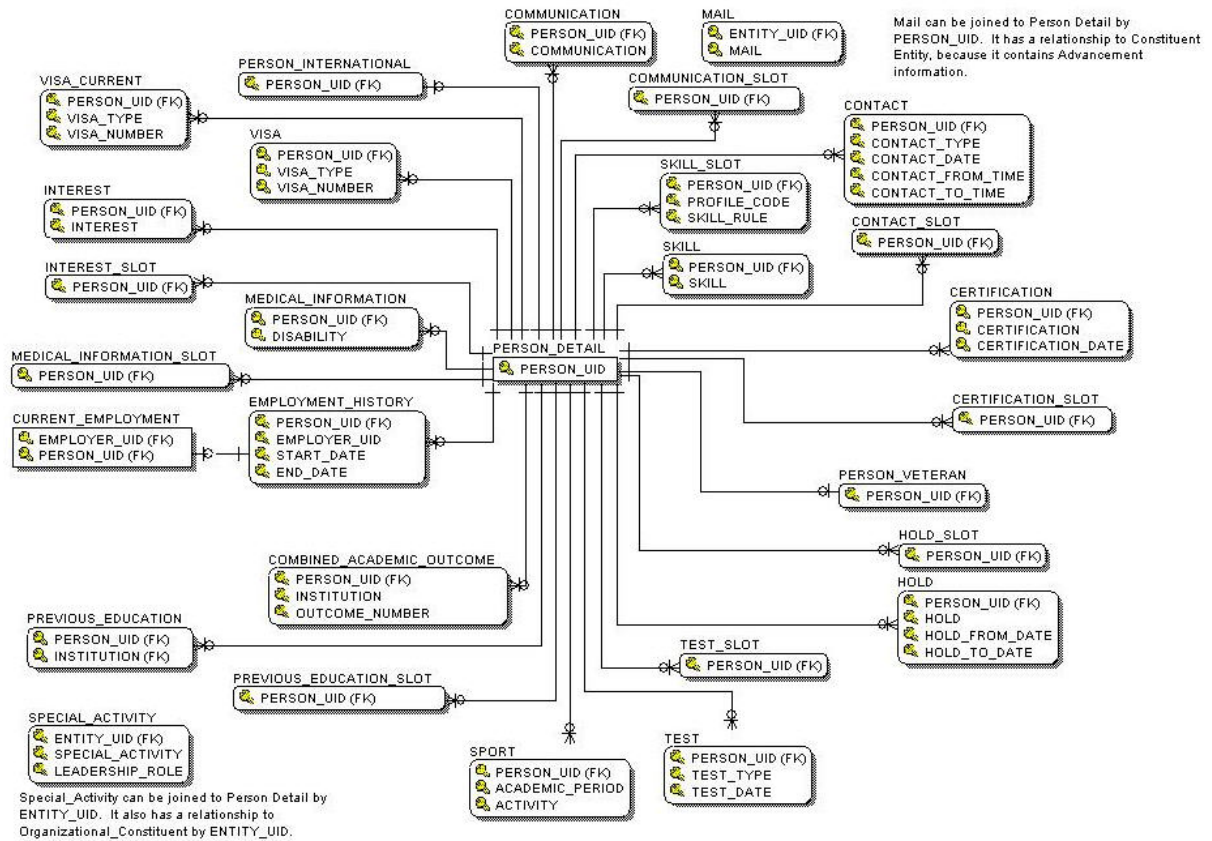
The PERSON_DETAIL view contains demographic data common to a person across the ODS data model and the institution enterprise. The data is specific to a person independent of whether that person is a student, faculty member, or employee, alumnus, etc. Data reflects only the most current information; changes are not tracked in the Banner ODS.

The data in this view includes current name, Id, gender, birth date, tax id, international details, confidentiality indicator, etc. There is one row per person. Data comes from the person identification (SPRIDEN) and person demographic information (SPBPERS) forms in Banner.

Person Role Diagram



Person Supplemental Diagram



Address Views and Their Purpose

Address views

A brief description of the address views is listed below. More detailed descriptions are included on the pages that follow.

- **Address** contains all addresses for an entity, person, institution, or organization.
- **Address_By_Rule** contains all addresses for an entity/person, institution, or organization per the display rules.
- **Address_Current** contains all active addresses for an entity/person, institution, or organization.
- **Address_PREFERRED** contains all preferred addresses and the associated primary active telephone data for an entity/person, institution, or organization.
- **Geographic_Region** contains data about the geographic regions associated with the addresses of an entity.
- **Person** contains demographic data (including addresses) common to a person across the ODS data model and the institution enterprise.
- **Person_Address** contains information used to add a mailing address to a report or print a mailing label.
- **Internet_Address** contains all internet address data for entities in Banner ODS.

Address

- Designed to allow the user to apply whatever rules they want to retrieve any address or series of addresses.
- You must understand the rules of selection such as dates and statuses.
- It will return multiple addresses.
- This does not use the address hierarchy approach.
- Advantage - lets you select addresses for future dates (those already coded to return active addresses use the SYSDATE as the date of currency).

Address_By_Rule

- Designed to be the primary address view for use in day to day reporting.
- Will return one currently active address for entity, based on the current date.
- Utilizes the values defined within the MGRSDAX table to identify a hierarchy of addresses to select from, so that a user can get whichever hierarchy of addresses they choose based on the business need (one hierarchy for Admissions, another for Registrar, etc.).
- Set up to use the ODS profile selection, so that individuals can have their own hierarchy that overrides the address rule provided as the default.
- All addresses retrieved by this view could have the parameter set up in the reports to allow for the hierarchy of 'ADMSADDR", but specific individuals, using their own profile, can get the same report, using the same parameters, but with an overridden address hierarchy.
- Most important and most frequently overlooked, is that the ADDRESS_RULE parameter MUST be supplied (along with the UID) or the resultant retrieval will appear as a Cartesian product.

Address_Current

- Designed to allow user to get only current addresses
- Multiple addresses will be returned
- Does not use the address hierarchy approach.

Address_Preferred

- Designed to return only the preferred, current address for an individual.
- Sets the preferred indicator in Banner, checking first in Advancement for a preferred address type, and then defaulting to a GTVSDAX value.
- Returns all preferred addresses that are active, regardless of address type.

Geographic_Region

- Contains data about the geographic regions associated with the addresses of an entity.

Person

- Contains the Preferred Address of the person as set by the preferred address of the institution.
- Preferred Address of the institution is set in the GTVSDAX table – PREFADDR.

Person_Address

- Contains information used to add a mailing address to a report or print a mailing label. Since the main purpose of this reporting view is to support correspondence, only persons who are not deceased will appear in this reporting view. All organizations and companies that are active will be selected for this reporting view.
- This view is the primary address view indicated on metadata business concept diagrams.

Internet_Address

- Contains all internet address data for entities in the Banner ODS.
- Reporting views include Internet_Address and Internet_Address_Current to support a variety of reports.
- The primary source for this data is the email table (GOREMAL).

Common Display Rules

Introduction

Display rules enable you to control and customize how data stored in your Banner ODS composite tables is displayed in your Reporting views. Display rules determine the positional location of data in a view, or the hierarchical order in which a particular type of data should be retrieved. "Positional" display rules are required for all Slotted views while "hierarchical" display rules are required for a sub-set of (non-slotted) Reporting views. There are also a number of display rules used to determine a value stored in either a Banner ODS composite table or displayed in a Banner ODS Reporting view. All display rules are stored in the Banner ODS database table - MGRSDAX.

GTVSDAX	MGRSDAX
GRDCHGHOLD	HOLDS
COMMINST	INST
COMMRACE	RACE

Screen Image

Preferences & Security Options Meta Data New Web Tailor Administration

Search Go [RETURN TO PREFERENCES & SECURITY MENU](#) [SITE MAP](#) [HELP](#) [EXIT](#)

Set Up a Display Rule

Click Create to add a new Display Rule.

Create

Select the Internal Group and/or Internal Code for the Display Rules you want to modify, then click Search.

-Show All Business Profiles- -Show All Internal Groups- -Show All Internal Codes- Search

RELEASE: BANNER ODS 8.0/BANNER EDW 8.0 powered by
SUNGARD HIGHER EDUCATION

Steps

Follow these steps to create a display rule.

1. Log into Banner ODS Administrative Interface.
2. Click the **Preferences and Security** tab.
3. Click the **Set up Data Display Rules** link.
4. Click the **Create** button.
5. Fill in the Information.
6. Click the **Save** button.

Finance Business Concept Diagrams



Introduction

The goal of this section is to introduce Finance business concept diagrams.

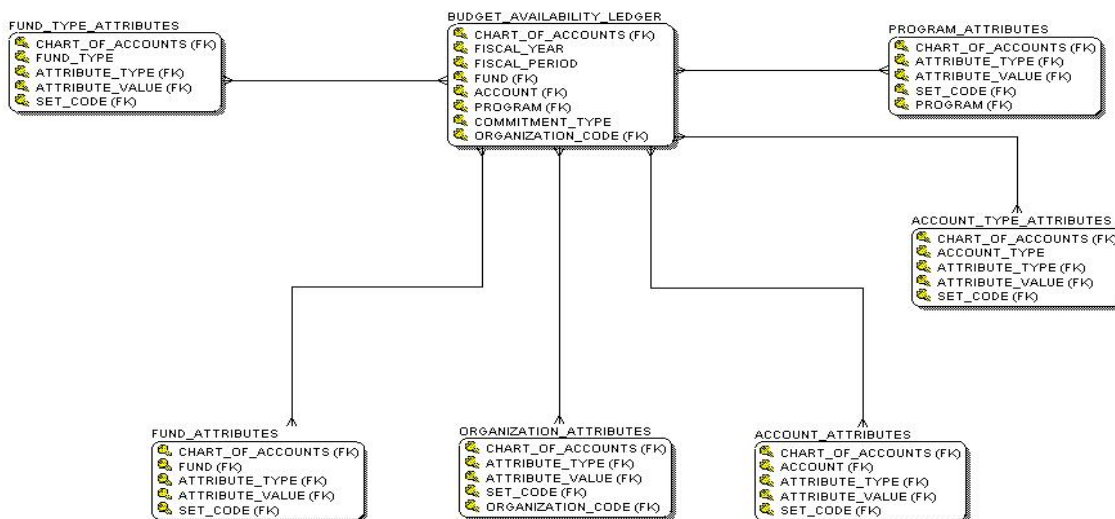
Objectives

At the end of this section, you will be able to

- identify Finance business concept diagrams
- describe the primary views.

Budget Availability Ledger Diagram

Budget Availability Ledger Diagram



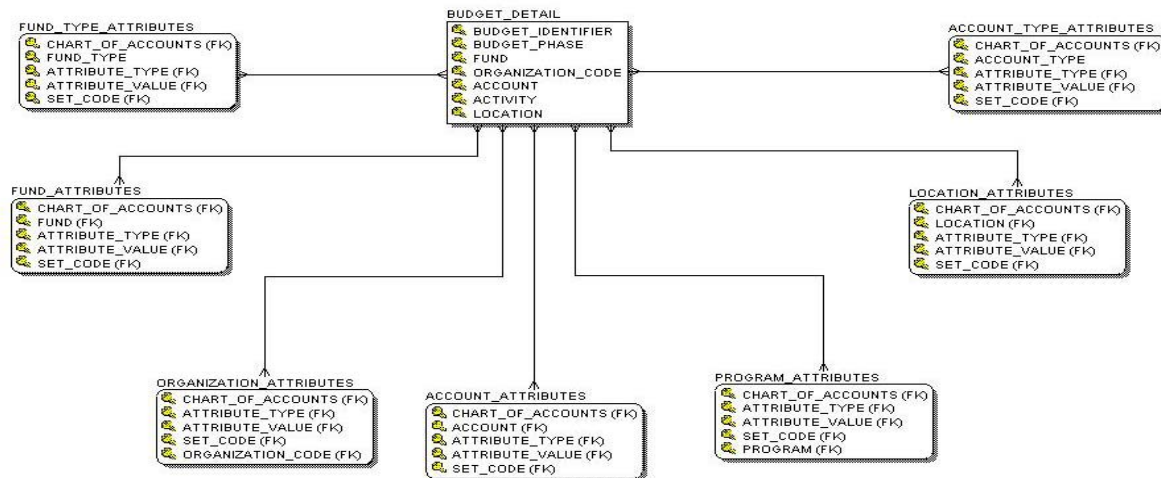
Primary View

The Budget Availability Ledger view displays the current budget and remaining balances for account distribution at any given point in time, based on the control keys set in Banner Finance.

It contains Available Balance Ledger accounting elements with hierarchical data and dollar information. This view retrieves fiscal year, budget, actuals, budget reservations, encumbrances and balance data. There is one row per fiscal year, per budgeting period per unique accounting distribution combination per commitment type. Data on this view comes from the Budget Availability Ledger (FGBBAVL) with hierarchies built in for Fund, Organization, Account, and Program.

Budget Detail Diagram

Budget Detail Diagram

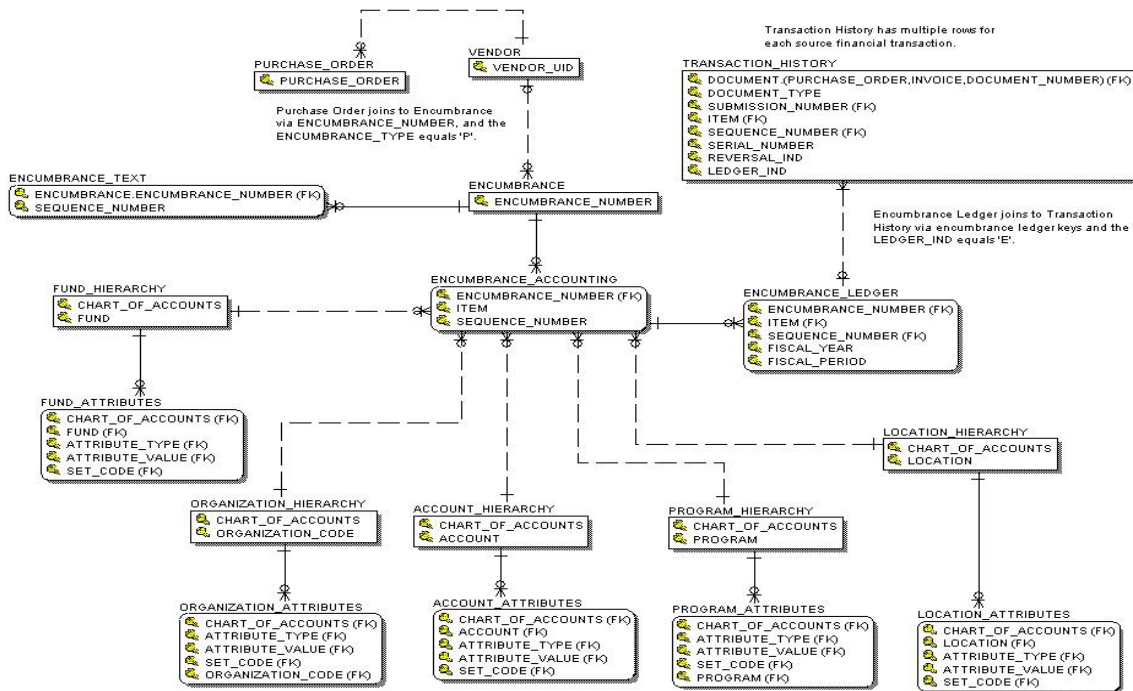


Primary View

The Budget Detail view displays budget detail accounting distribution lines items by budget id and budget phase with associated reporting attributes. This view retrieves budgeted line items for a selected accounting distribution combination by budget id and budget phase. Additional reporting can be at the various hierarchy levels for fund, organization code, account, program and location. The data includes budget id and phase, budgeted FOAPAL and fiscal year, base budgeted amounts, current budget amounts and year to date activity, FOAPL hierarchy data and reporting attributes. There is one row per budget ID per budget phase per budgeted line item (chart of accounts, fund, organization code, account, program, activity, location). Data in the view comes from the Budget Detail Line Item (FBBBLIN) and Budget Line Audit History (FBRAUDT) tables.

Encumbrance Diagram

Encumbrance Diagram

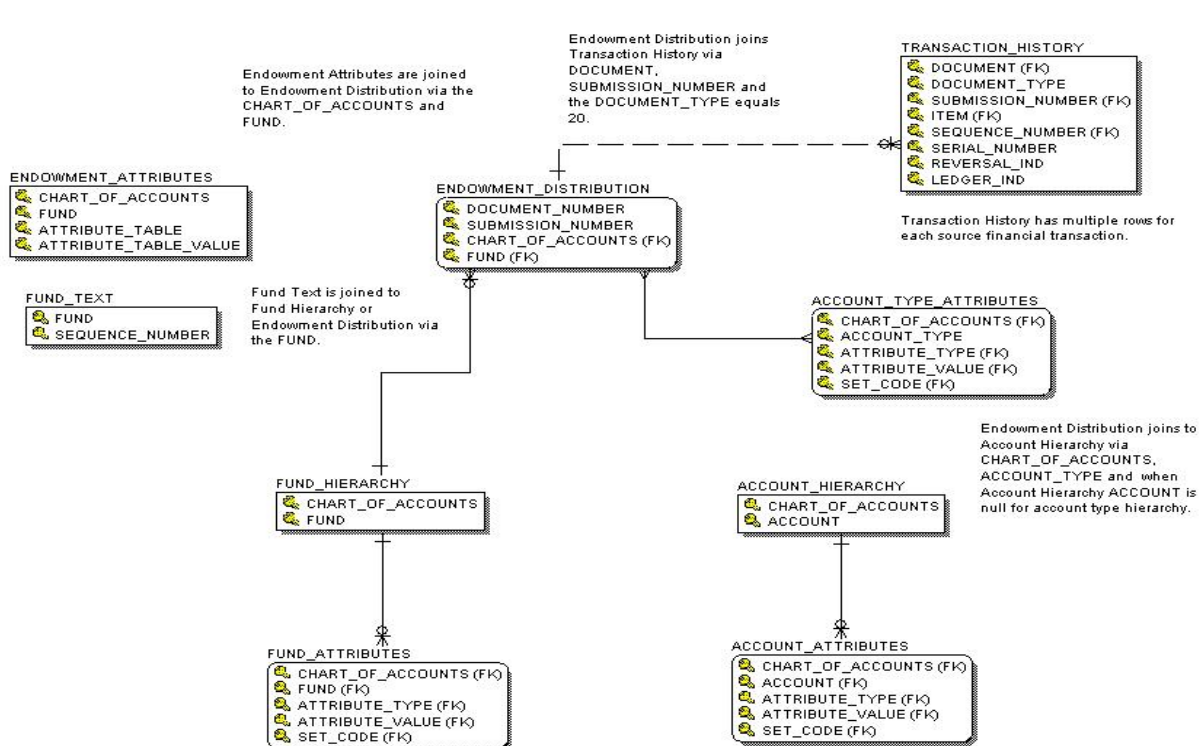


Primary View

The Encumbrance view displays items and sequential account information on accounts that have been established, liquidated or adjusted. This view retrieves Encumbrance accounting for purchase orders, requisitions, labor and general encumbrances. It includes encumbrance, item number, sequence, chart of accounts, accounting distribution, and encumbrance status. There is one row per encumbrance document per item per sequence number. Data in this view comes from the Encumbrance Item (FGBENCD) table.

Endowment Distribution Diagram

Endowment Distribution Diagram

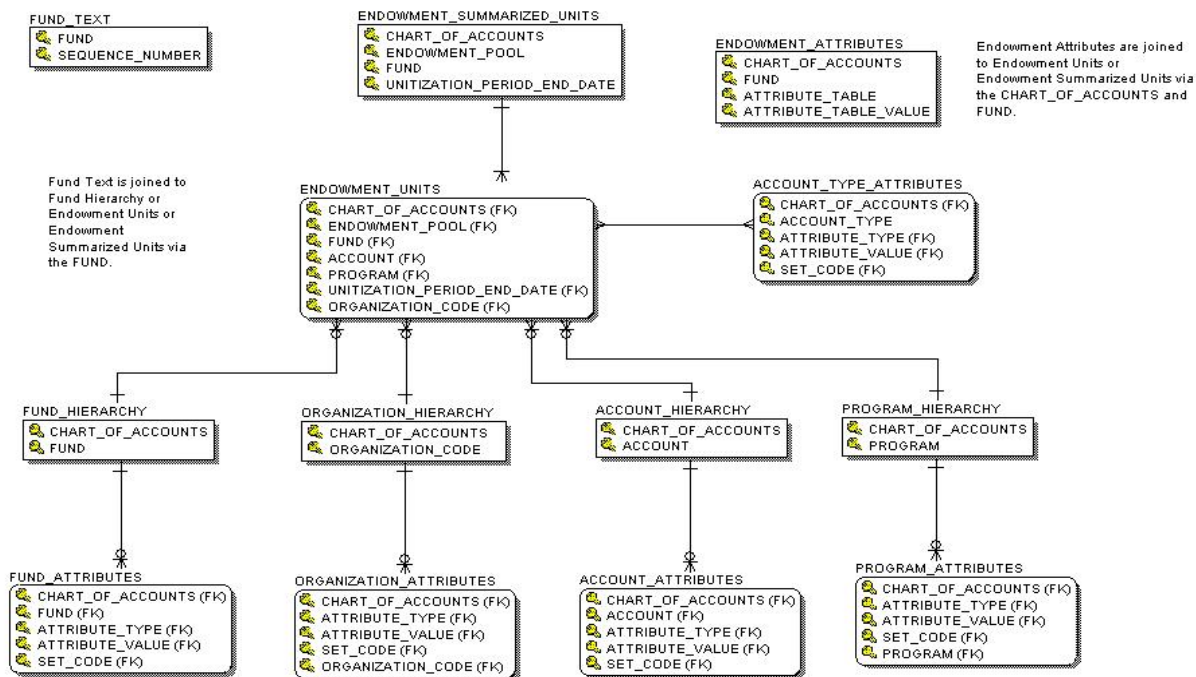


Primary View

The Endowment Distribution view displays historical endowment fund distributions with default income accounting distributions, unrealized and realized gain and lost accounting distributions, and variance accounting distributions, reportable by income fund, account and account type hierarchies. This view retrieves historical distributed spendable income for endowment funds by document. Data includes income accounting distribution, unrealized gain and loss accounting distribution, and gain and loss accounting distribution with each of their distribution frequencies. Fund hierarchy, account hierarchy, fund attributes, account attributes and endowment attributes. There is one row per document number per submission number per chart of accounts per endowment fund. Data in this view comes from the Endowment Fund (FNVDW), Endowment Pool (FNVPOOL), Endowment Distribution Process History (FNBDSH) tables.

Endowment Units Diagram

Endowment Units Diagram

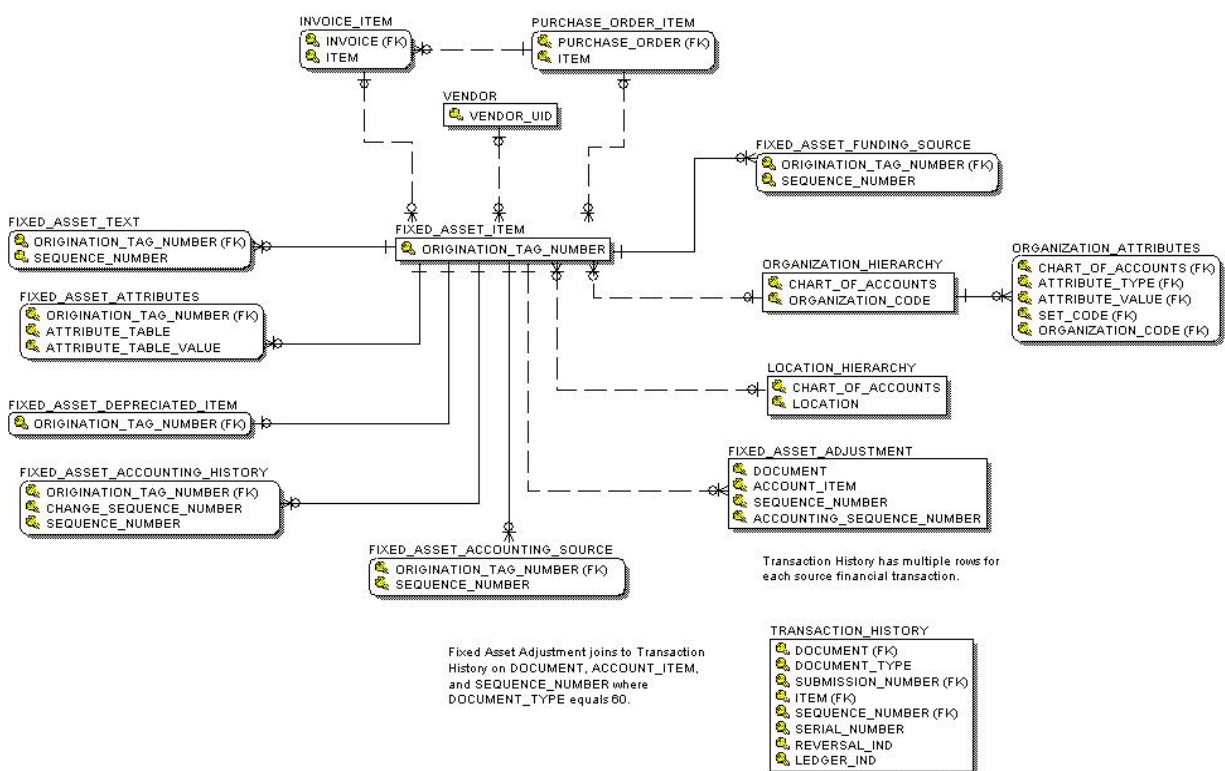


Primary View

The Endowment Units view displays Endowment fund units and their value, including gains and losses. This view retrieves unitized endowment funds within a pool for each unitization period end date. Data includes units purchased, unit market value, book amount, chart of accounts, accounting distribution, pool, income accounting distributions, gain or loss accounting distributions, unrealized gain or loss accounting distributions, variance spending accounting distributions. There is one row per unitization period per chart of accounts per endowment pool per unique accounting distribution. Data in this view comes from the Endowment Fund (FNVENDW), Endowment Pool (FNVPOOL), Endowment Unitization History (FNBUNTH) tables.

Fixed Assets Diagram

Fixed Assets Diagram



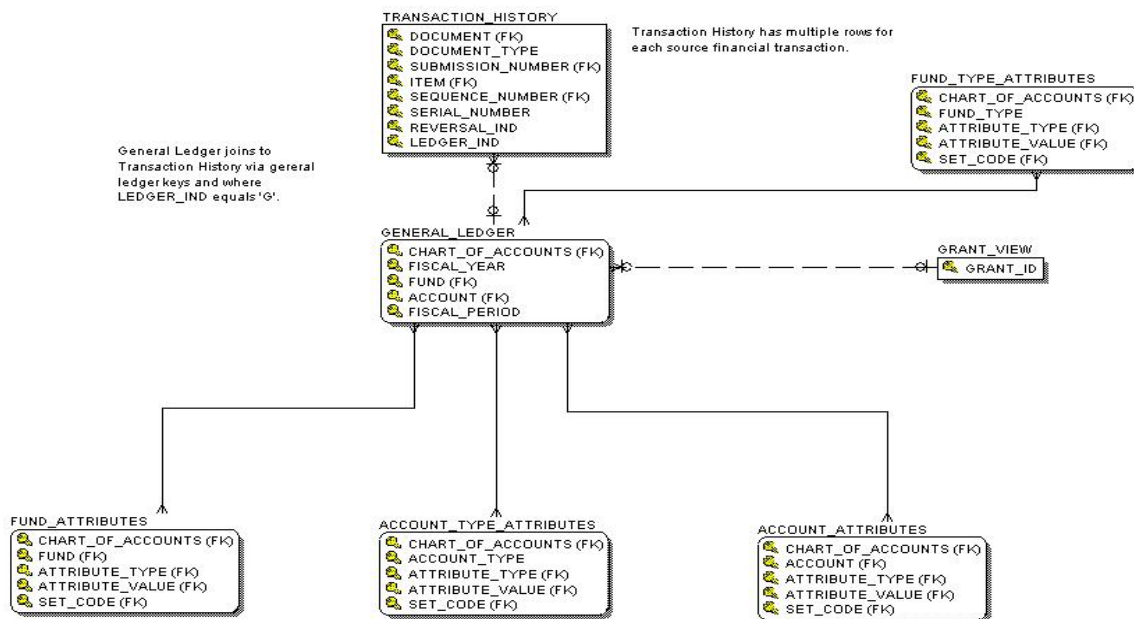
Primary View

The Fixed Assets view shows assets, funding source, account adjustments, capitalization and depreciation information. It displays all fixed assets at the institution. This view retrieves general asset information, tag number, capitalization date, asset type, original cost, source information, general depreciation information. There is one row per fixed asset origination tag

Data in this view comes from the Fixed Asset Master (FFBMAST), Capitalization Depreciation Accounting (FFRMASA) tables.

General Ledger Diagram

General Ledger Diagram

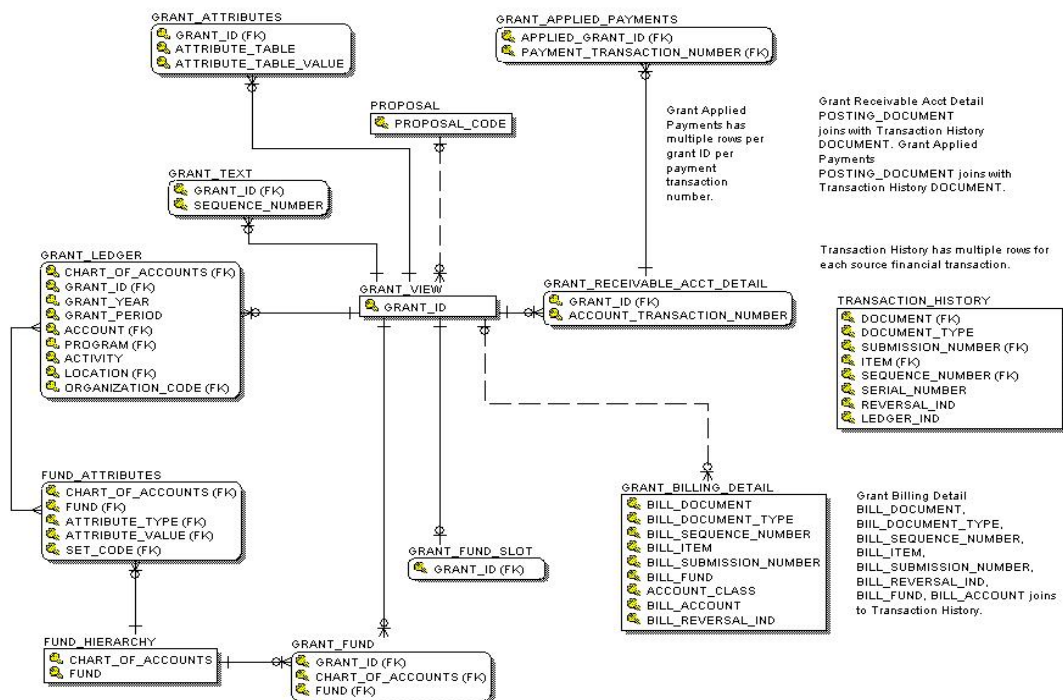


Primary View

The General Ledger view displays ending and beginning balances of assets, liabilities, fund balances and control accounts for grants and programs. It displays general ledger funds and accounts for asset, liabilities, control accounts and fund balance with hierarchical data and dollar information to report upon any level of fund or account. The view retrieves fiscal year, posting period, beginning balance, actuals, current balance and ending balance. There is one row per fiscal year per period per chart of accounts per fund per account. The data in this view comes from the General Ledger (FGBGENL) with hierarchies built in for Fund and Account.

Grant and Project Diagram

Grant and Project Diagram

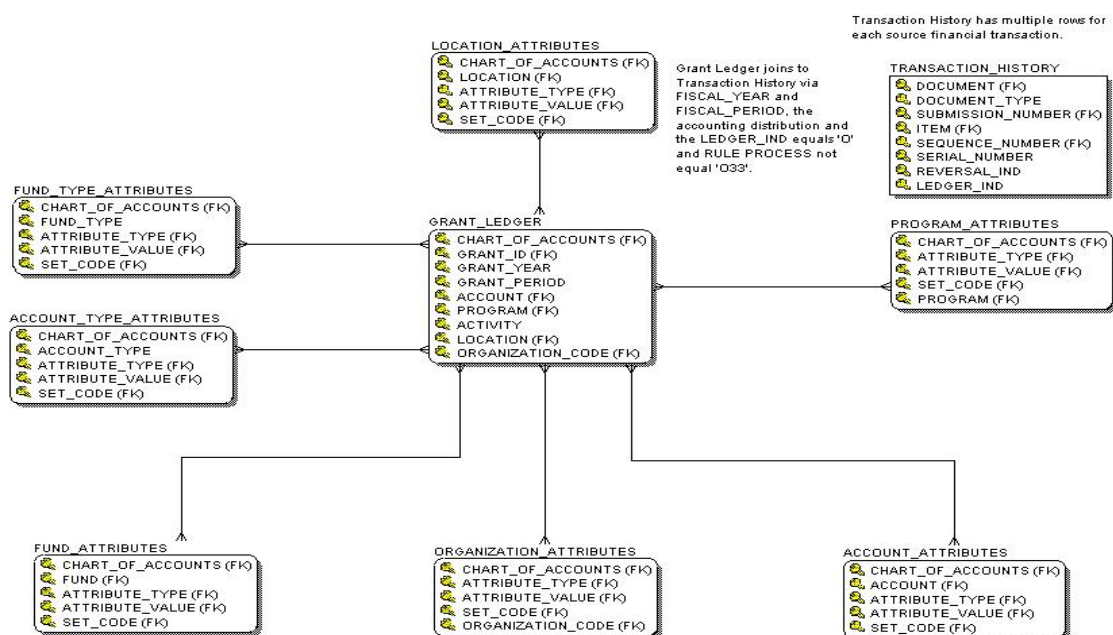


Primary View

The Grant and Project view contains payments applied, attributes and billing details of grants and projects. It displays all general grant or project data. This view retrieves grant title, principal investigator, agency and agency hierarchy, responsible organization and hierarchy, categories, project start date and end date, originating proposal, indirect cost and cost share codes. There is one row per grant or project. Data in this view comes from the Grant project (FRBGRNT) table.

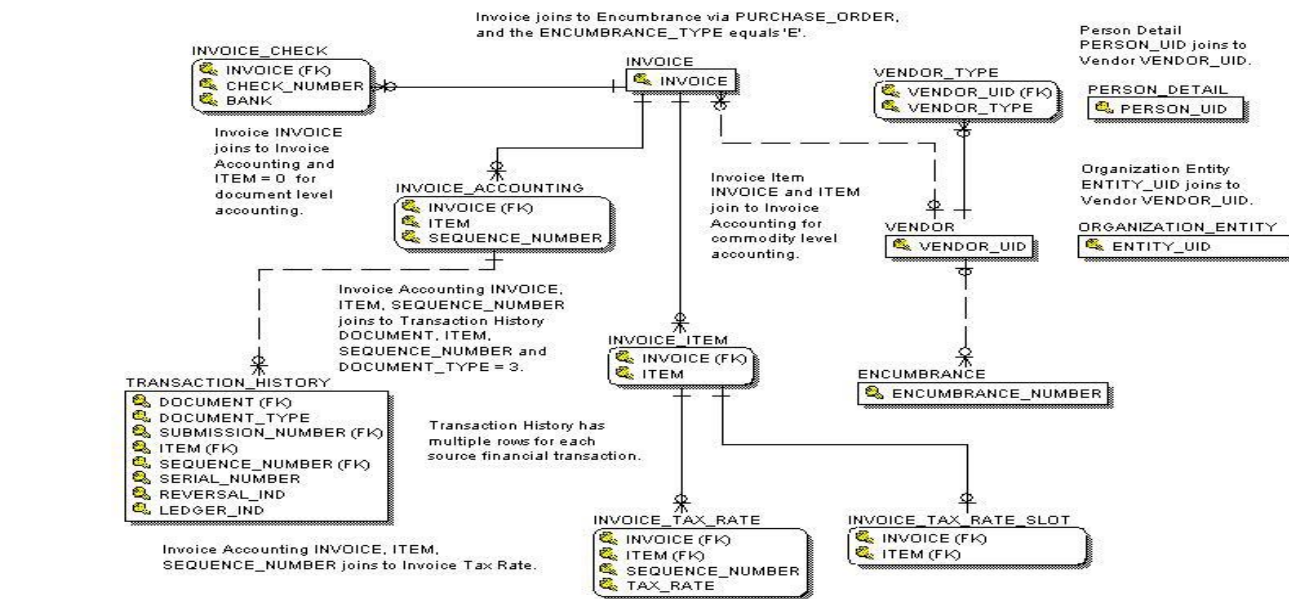
Grant Ledger Diagram

Grant Ledger Diagram



Primary View

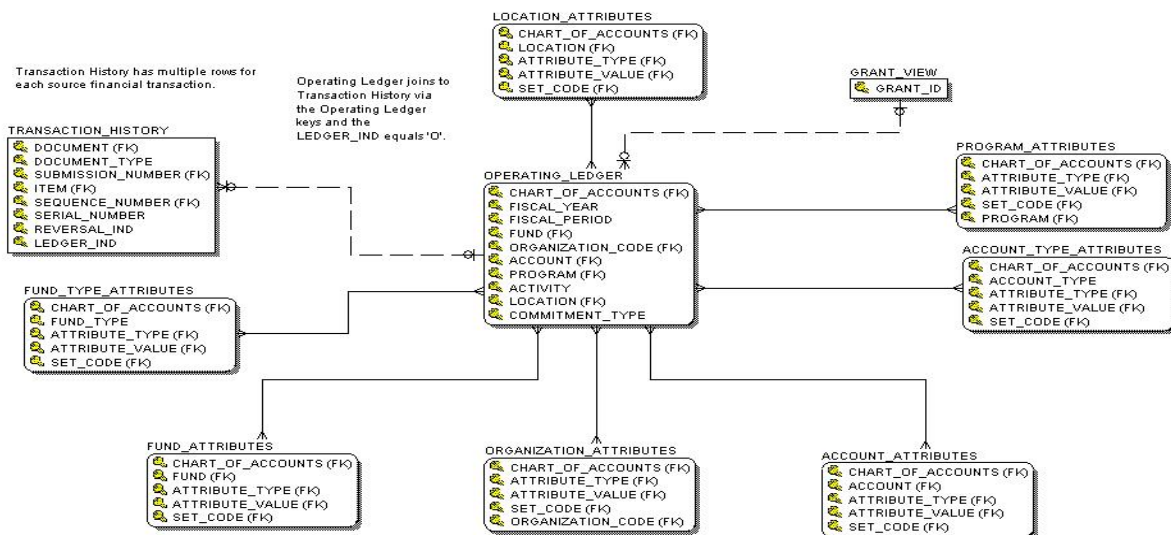
The Grant Ledger view displays distributions of present and inception to date. It contains grant ledger unique accounting distributions with hierarchical data and inception to date dollar information for revenue, labor, expenses, and transfers. This view retrieves grant title year and period, fiscal year and period, current period amounts and inception to period amounts for budget, budget adjustments, actuals, budget reservations, encumbrances and remaining balance. There is one row per grant per grant year per grant period per unique accounting distribution. The data in this view comes from the Grant Ledger (FRRGRNL) with hierarchies built in for Fund, Organization, Account, Program and Location.



The Invoice Payable view displays invoiced items and sequential accounting information set up as direct pay invoices or invoicing off of General Encumbrances with vendor and check payment relationships. It contains all invoices and checks. This view retrieves invoice items with purchase order, and commodity information. This includes each base and converted amount for unit price, taxes, discounts and additional charges as well as approved quantity. Invoice taxes if applicable and checks. There is one row per invoice item (Invoice_Item). Data in this view comes from the Invoice Item (FARINVC) table.

Operating Ledger Diagram

Operating Ledger Diagram

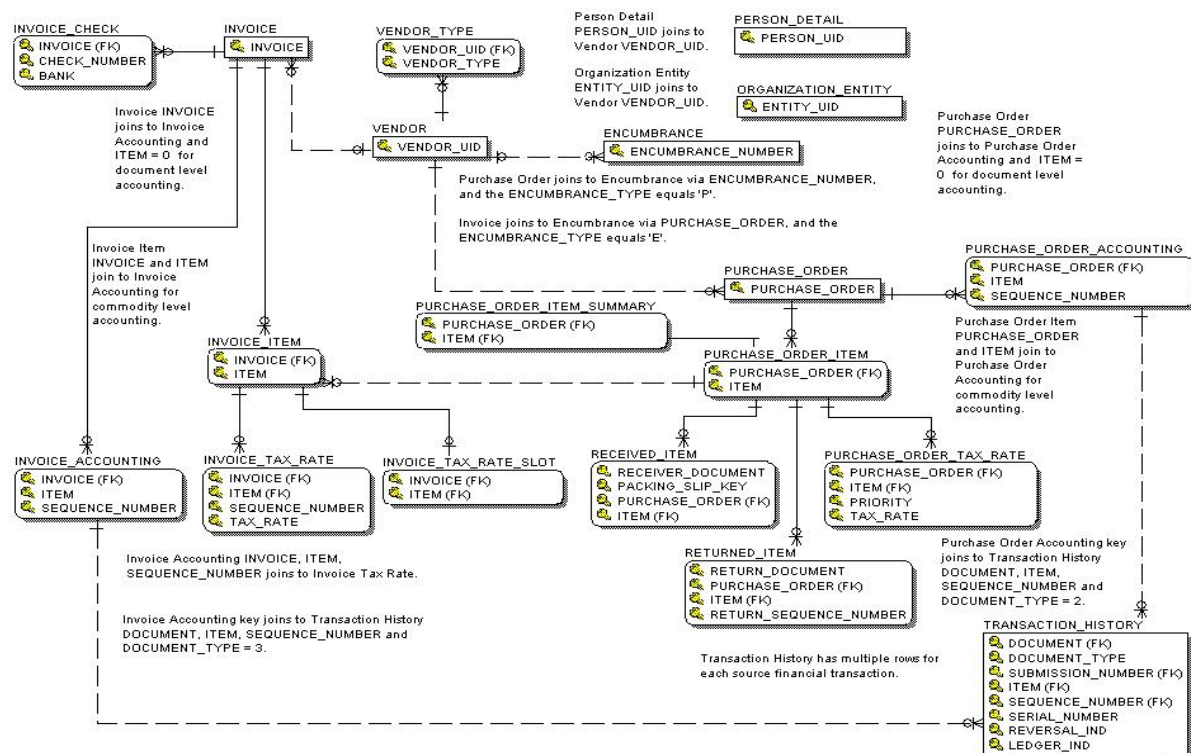


Primary View

The Operating Ledger view displays labor expenditures, revenue, transfers for fund accounting by fiscal year. It contains operating ledger unique accounting distributions with hierarchical data and inception to date dollar information for revenue, labor, expenses, and transfers. This view retrieves organization financial manager, unique accounting distributions, fiscal year and period, current period amounts and summary amounts for budget, budget adjustments, actuals, budget reservations, encumbrances and remaining balance. There is one row per chart of accounts per fiscal year per fiscal period per fund per organization per account per program per activity per location per commitment type. Data in this view comes from the Operating Ledger (FGBOPAL) with hierarchies built in for Fund, Organization, Account, Program, and Location.

Purchasing Payable Diagram

Purchasing Payable Diagram

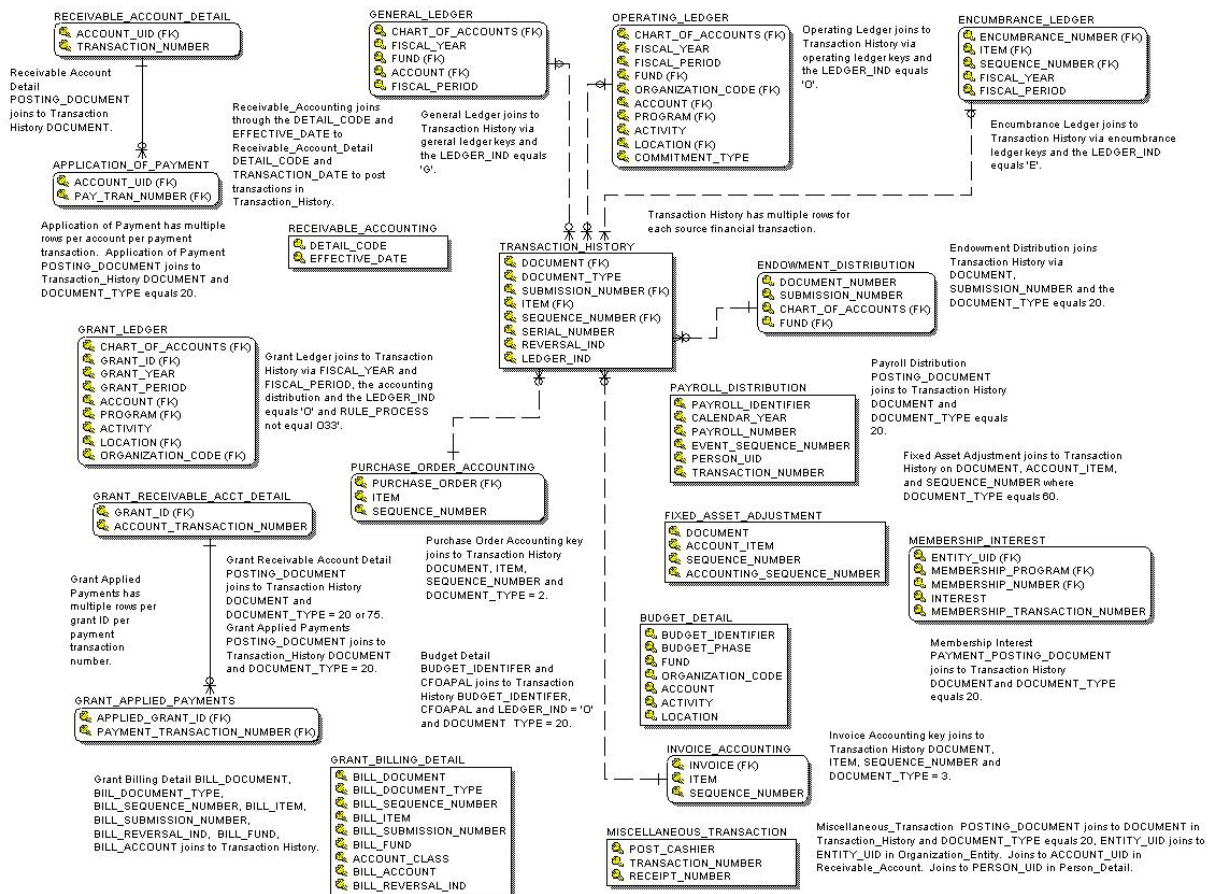


Primary View

The Purchasing Payable view displays purchase order item, checks issued, and invoices tied and not tied to it. It contains current purchase order items. This view retrieves purchase order, item, encumbrance status, commodity, ship destination, unit of measure, unit price, quantity ordered, discount amount, tax amount, additional charges amount, vendor reference number, requisition and bid numbers. There is one row per purchase order and item. Data in this view comes from the Purchase Order Item (FPRPODT) table.

Transaction History

Transaction History Diagram



Primary View

The Transaction History view displays detail for all ledgers. It is a place to research out-of-balance conditions. It is the largest and most important concept. It contains all posted finance transactions for each true ledger. This view retrieves journal type, accounting distribution, accounting distribution hierarchies, transaction amount and date, document reference number, type of transaction, vendor, bank, deposit number, normal balance, internal account type, internal account type description. There are multiple rows per posted accounting transaction. Data in this view comes from the Transaction History (FGBTRNH) and Transaction Detail (FGBTRND) tables.

Transaction History – Ledger Indicators and Field Codes

Ledger_Ind	Ledger	Field_Code	Amount Field Updated	Description
G	General	01	Sum_Periodic_Debits	Debits
		02	Sum_Periodic_Credits	Credits
O	Operating	01	Curr_Adopted_Budget	Current Period Original Budget
		02	Curr_Budget_Adjustments	Current Period Budget Adjustments
		03	Curr_Year_To_Date_Activity	Current Period Activity
		04	Curr_Encumbrances	Current Period Purchase Order and General Encumbrance
		05	Curr_Budget_Reservation	Current Period Requisition Budget Reservation
		06	Curr_Accumulated_Budget	Current Period Accuonted Budget
		07	Curr_Temporary_Budget	Current Period Temporary Budget
		08	Curr_Grant_Activity	Obsolete
E	Encumbrance	01	Original_Amount	Encumbrance Amount
		02	Curr_Adjustments	Original Encumbrance Adjustments
		03	Curr_Liquidations	Encumbrance Liquidations

Transaction History Sequence Numbers

Sequence Number	Code	Description
1	REQ	Requisition
2	PO	Purchase Order
3	INV	Invoice
4	BID	Request for Bid
5	CCK	Check Cancellation
6	RCN	Reconciliation Items
7	RTN	Returns
8	CHK	Check Disbursement
9	FED	Federal 1099 Disbursement
10	ST	State 1099 Disbursement
11	CM	Credit memo
12	IDR	Indirect Cost Rate
13	AGR	Agreements
14	COM	Commodity
15	PRJ	Project
16	IDC	Indirect Cost Charge
17	IDD	Indirect Cost Distribution
18	CSR	Cost Share Rate
19	CSC	Cost Share Charge
20	JV	Journal Document
21	ISS	Issues
22	RCV	Receiving Documents
23	PAK	Packing Slips for Receiving
24	TRN	Stores Transfers
25	ENC	Encumbrance
26	ADJ	Adjustments to Inventory
27	CSD	Cost Share Distribution
28	BAS	Basis Code
29	PRO	Proposal Code

Sequence Number	Code	Description
30	PRP	Proposal
31	SRQ	Special Requirements
32	EVT	Research Accounting Events
40	STK	Stocks
41	STO	Stock Options
42	BND	Bonds
43	MKT	Money Market
44	CD	Certificate of Deposit
45	PTY	Appreciable Property
50	FND	Fund Records
51	GRT	Research Accounting Grants
52	CIP	Construction Projects
60	FAA	Fixed Assets Accounting Adjustments
61	FAS	Fixed Assets
62	TRF	Transfers
70	IMG	Investment Manager
71	BRQ	Budget Request
72	FTV	FTV Tables
73	FVD	Vendor Table
74	SUM	General Ledger Summary Records
75		Research Accounting Grant Billing
80	DCR	Direct Cash Receipts
90	EOC	Encumbrance Open/Close Document
91	BFM	Grant Billing Format
98	PCD	Purchase Card
99	PMS	Payment Management System code

Finance Display Rules



Introduction

The goal of this section is to list the Finance display rules.

Objectives

At the end of this section, you will be able to name the Finance display rules.

Finance Display Rules

Rules

The Finance display rules are listed below.

GTVSDAX	MGRSDAX
VENDADDR	ADDRESS

Finance Self-Service Reporting Templates



Section goal

The purpose of this section is to access Finance Self-Service reports.

Objectives

At the end of this section, you will be able to access Finance Self-Service reports.

Finance Self-Service Reporting Templates

Purpose

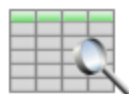
The Finance Template can be used to search for populations of Finance data. A report will display after you have selected your search criteria and click the **Search** button.

Steps

Follow these steps to view Finance data using the template provided.

1. Access the Finance Self Service Reporting application by clicking the **Finance Templates** link.

Self-Service Reporting



- ▶ Accounts Receivable Templates
- ▶ Advancement Templates
- ▶ Finance Templates
- ▶ Financial Aid Templates
- ▶ Human Resources Templates
- ▶ Student Templates

2. Click the **General Ledger** link.

Accounts Receivable

Advancement

Financial Aid

Finance

Human Resources

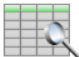
Student



Populations Home Help

Menu General Ledger Operating Ledger

Home > Finance Templates

Finance Templates



- ▶ **General Ledger**
This report template uses reporting views from the [General Ledger Business Concept Diagram](#). Data includes general ledger financials for assets, liabilities, fund balances, and control accounts. 
- ▶ **Operating Ledger**
This report template uses reporting views from the [Operating Ledger Business Concept Diagram](#). Data includes available budget for departments at various levels of roll-up. Accounts for revenue, labor, expense and transfers are represented with budgeted amounts, encumbered amounts, and actual activity. 

3. Enter your Search Criteria by clicking the appropriate link.

Accounts Receivable

Advancement

Financial Aid

Finance

Human Resources



Student

Menu General Ledger Operating Ledger

Home > Finance Templates > General Ledger Search Criteria

Populations Home Help

General Ledger Search Criteria

Search Rule: - None -  

Search **Reset Search**

Recommended Search Criteria

*** Chart**

- At least one Chart must be selected -

B - Sungard Higher Education

I - SCT University

Populate Search Criteria for Chart(s) Selected

*** Fiscal Year**

- At least one Year must be selected -

Select Chart then Populate.

Fiscal Period

- ALL -

00

01

02

03

Exclude Fund Attributes

☒ Yes ☐ No

Exclude Fund Type Attributes

☒ Yes ☐ No

Exclude Account Attributes

☒ Yes ☐ No

Exclude Account Type Attributes



☒ Yes ☐ No

Additional Search Criteria [[Show](#) - [Hide](#)]

- Fund Search Criteria
- Account Search Criteria
- Roll Fund Search Criteria
- Roll Account Search Criteria
- Fund Attribute Search Criteria
- **Account Attribute Search Criteria**

Additional Search Criteria [[Show](#) - [Hide](#)]

Search **Reset Search**

Search Rule: - None -  

Show SQL

[Back to top](#)

powered by **SUNGARD**
HIGHER EDUCATION

- After you have entered your search criteria, click the **Search** button.
- View the results of the search.

Populations Home Help

Accounts Receivable Advancement Financial Aid **Finance** Human Resources Student

Menu **General Ledger** Operating Ledger

Home > Finance Templates > General Ledger Search Criteria > General Ledger List

General Ledger List

Search Rule: - None -

Found 10815 records in 4.69 seconds

1 2 3 4 5 6 7 8 9 10

Detail Reports	Chart	Fiscal Year	Fiscal Period	Beginning Balance	Current Actuals	Ending Balance	Normal Balance	Fund	Fund Desc	Account	
	B	2007	00	0.00	<u>-62,115.58</u>	-62,115.58	D	01	Current General Fund	1090	Cash Interf
	B	2007	00	0.00	<u>-100.00</u>	-100.00	D	01	Current General Fund	1240	Money Mark
	B	2007	00	0.00	<u>-75.00</u>	-75.00	C	01	Current General Fund	2101	Accounts P
	B	2007	00	0.00	<u>-100.00</u>	-100.00	C	01	Current General Fund	2405	Unapplied t
	B	2007	00	0.00	<u>100.00</u>	100.00	C	01	Current General Fund	2410	Deposits P
	B	2007	00	0.00	<u>62,290.58</u>	62,290.58	C	01	Current General Fund	3081	Fund Balan
	B	2007	00	0.00	<u>-23,665.12</u>	-23,665.12	D	010990	General & Administration Fund	1090	Cash Interf
	B	2007	00	0.00	<u>23,665.12</u>	23,665.12	C	010990	General & Administration Fund	3081	Fund Balan
	B	2007	00	0.00	<u>-1,500.00</u>	-1,500.00	D	100001	Travel Adv - Dr Eubanks 710000010	1090	Cash Interf
	B	2007	00	0.00	<u>1,500.00</u>	1,500.00	D	100001	Travel Adv - Dr Eubanks 710000010	1359	Employee T
	B	2007	00	0.00	<u>0.00</u>	0.00	C	100001	Travel Adv - Dr Eubanks 710000010	2101	Accounts P
	B	2007	00	0.00	<u>500.00</u>	500.00	D	100077	Travel Adv - Thomas Hess 710000077	1359	Employee T

Records Per Page: 100

General Ledger List Summary

Found 1 record in 2.6 seconds

Beginning Balance	Current Actuals	Ending Balance
-210,607.20	-40,744.80	-251,352.00

Search Criteria [[Show](#) - [Hide](#)]

- Recommended Search Criteria
- Fund Search Criteria
- Account Search Criteria
- Roll Fund Search Criteria
- Roll Account Search Criteria
- Fund Attribute Search Criteria
- Account Attribute Search Criteria

Search Criteria [[Show](#) - [Hide](#)]

[Back to top](#)

powered by **SUNGARD**
HIGHER EDUCATION

Exercise



Section goal

The purpose of this section is to practice using Finance data.

Objectives

At the end of this section, you will be able to run Finance sample reports.

Run Finance Sample Reports

Sample Reports Exercise

Run the following sample reports using the Report Name, Business Concept Diagrams and Joins, Views and Data Columns, and Parameters, Groups and Filters.

Report Name	Business Concept Diagram and Joins	Views and Data Columns	Parameters, Groups, Filters, etc.
Fixed Assets Annual Inventory	Fixed Asset BCD Join Fixed_Asset_Item to Fixed_Asset_Attributes (using Origination_Tag_Number) Join Fixed_Asset_Item to Location_Hierarchy (using Chart_Of_Accounts and Location)	Fixed_Asset_Item Permanent_Tag_Number, Asset_Desc, Location, Manufacturer, Serial_Number, Acquisition_Date, Total_Original_Cost_Amount Location_Hierarchy Location_Desc Fixed_Asset_Attributes Attribute_Desc	
Grant Finance Summary	Budget Availability Ledger BCD	Budget_Availability_Ledger Fund, Sum_Budget_Adjustments, Sum_Year_To_Date_Actv, Sum_Encumbrances, Sum_Remaining_Balance, Sum_Reallocated_Budget, Sum_Budget_Reservation	
Outstanding Checks	Invoice Payable BCD Join Invoice to Invoice_Check (using Invoice)	Invoice Vendor_Name Invoice_Check Check_Number, Bank, Check_Date, Net_Amount, Reconciliation_Ind	Parameters Check_Date Filters Reconciliation_Ind is missing

Report Name	Business Concept Diagram and Joins	Views and Data Columns	Parameters, Groups, Filters, etc.
Processed POs	<p>Purchasing Payable BCD</p> <p>Join Purchase_Order to Purchase_Order_Accounting (using Purchase_Order)</p> <p>Join Purchase_Order_Accounting to Transaction_History (using Purchase_Order, Item, Sequence_Number)</p>	<p>Purchase_Order Buyer, Purchase_Order, PO_Change_Order</p> <p>Transaction History Transaction_Amount, Transaction_Date, Ledger_Ind, Chart_of_Accounts, Fiscal_Year, Document_Type</p>	<p>Parameters Transaction_Date is between a specific "Begin Date" and "End Date"</p> <p>Filters Ledger_Ind=O, Chart_of_Accounts=W, Fiscal_Year=(year), PO_Change_Order is missing, Document_Type=2</p> <p>Calculated Fields Total (Transaction_Amount)</p>
Revenue & Expenditures for Select Organizations	<p>Operating Ledger BCD</p>	<p>Operating_Ledger Organization_Level_5, Account_Level_1, Account Desc_1, Curr_Year_To_Date_Activity, Sum_Year_To_Date_Activity, Sum_Adopted_Budget, Fiscal_Period, Organization_Code, Organization_Code_Desc</p>	<p>Parameters Fiscal_Year</p> <p>Groups Fiscal_Period, Organization_Level_5, Organization_Desc_5</p> <p>Sorts Account_Level_1</p> <p>Filters Organization_Code in (codes)</p> <p>New Field If Sum_Year_To_Date_Activity=C, then *-1, else Sum_Year_To_Date_Activity</p>

Report Name	Business Concept Diagram and Joins	Views and Data Columns	Parameters, Groups, Filters, etc.
Travel Stats	<p>Invoice Payable BCD</p> <p>Join Invoice to Invoice_Item, Invoice_Accounting (using Invoice)</p> <p>Join Invoice_Accounting to Transaction_History (using Invoice, Item, and Sequence_Number)</p>	<p>Invoice Vendor_Name</p> <p>Invoice_Item Invoice, Commodity_Desc</p> <p>Invoice_Accounting Fund, Account, Approved_Amount,</p> <p>Transaction_History Transaction_Date, Document_Type</p>	<p>Parameters Transaction_Date, is between specific "Begin Date" and "End Date"</p> <p>Filters Invoice in (Travel codes), Document_Type=3</p>

Appendix



60 Reporting and Slotted Common Views

Purpose

The table below lists the 60 reporting and slotted common views.

Activity	Hold	Person International
Address	Hold_Slot	Person_Sensitive
Address_By_Rule	Institution	Person_Sensitive_Race
Address_Current	Institution_Characteristic	Person_Sensitive_Race_Slot
Address_Preferred	Institution_Demographic	Person_Veteran
Calendar Date Hierarchy	Inst_Characteristic_Slot	Previous_Education
Certification	Interest	Previous_Education_Attendance
Certification_Slot	Interest_Slot	Previous_Education_Slot
Combined_Academic_Outcome	Internet_Address	Relationship
Communication (Mailing)	Internet_Address_Current	Salutation
Communication_Slot	Mail	Secondary_School_Subject
Contact	Mail_Slot	Skill
Contact_Slot	Medical_Information	Skill_Slot
Cross_Reference_Slot	Medical_Information_Slot	Telephone
Current_Employment	Organization_Entity	Test
Employment_History	Organization_Entity_Address	Test_Slot
Event	Past_Employment_Slot	Validation
Event Invitee	Person	Visa
Geographic_Region	Person_Address	Visa_Current
Geographic_Region_Institution	Person_Detail	Year_Type_Definition

64 Reporting and Slotted Finance Views

Purpose

The table below and on the next page lists the 64 reporting and slotted Finance views are listed in the table below:

Account_Attributes	Fixed_Asset_Funding_Source	Invoice_Tax_Rate
Account_Hierarchy	Fixed_Asset_Item	Invoice_Tax_Rate_Slot
Account_Index	Fixed_Asset_Text	Location_Attributes
Account_Type_Attributes	FOAPAL_NO_Attributes	Location_Hierarchy
Activity_Attributes	Fund_Attributes	Operating_Ledger
Attribute_Sets	Fund_Hierarchy	Organization_Attributes
Budget_Availability_Ledger	Fund_Text	Organization_Hierarchy
Budget_Detail	Fund_Type_Attributes	Program_Attributes
Chart_Attributes	General_Ledger	Program_Hierarchy
Encumbrance	Grant_Applied_Payments	Proposal
Encumbrance_Accounting	Grant_Attributes	Purchase_Order
Encumbrance_Ledger	Grant_Billing_Detail	Purchase_Order_Accounting
Encumbrance_Text	Grant_Fund	Purchase_Order_Item
Endowment_Attributes	Grant_Fund_Slot	Purchase_Order_Item_Summary
Endowment_Distribution	Grant_Ledger	Purchase_Order_Tax_Rate
Endowment_Summarized_Units	Grant_Receivable_Account_Detail	Received_Item
Endowment_Units	Grant_Text	Returned_Item
Fixed_Asset_Accounting_History	Grant_View	Transaction_History
Fixed_Asset_Accounting_Source	Invoice	Vendor

Fixed_Asset_Adustment	Invoice_Accounting	Vendor_Type
Fixed_Asset_Attributes	Invoice_Check	
Fixed_Asset_Depreciated_Item	Invoice_Item	